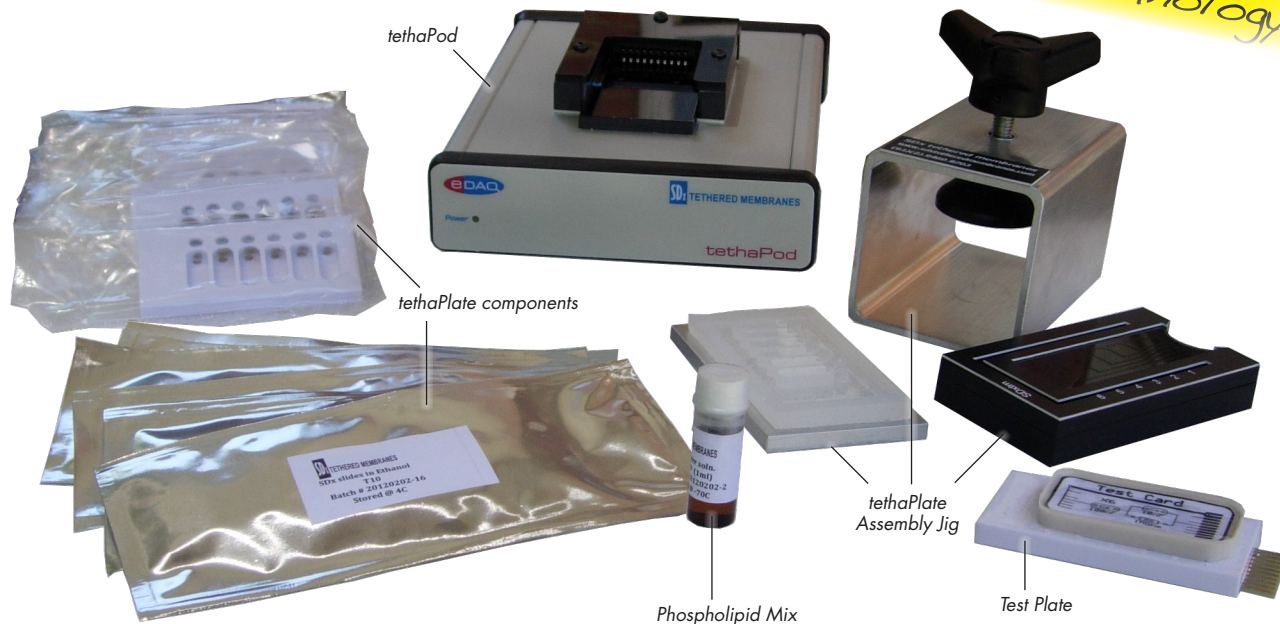




## tethaPod Starter Kit (Model SDx-K1)

*Tethered Membrane Technology!*



### Description

An economically priced bundle for the continuous monitoring of the conductivity and capacitance of tethered bilayer membranes comprising **tethaPod™** and accessories:

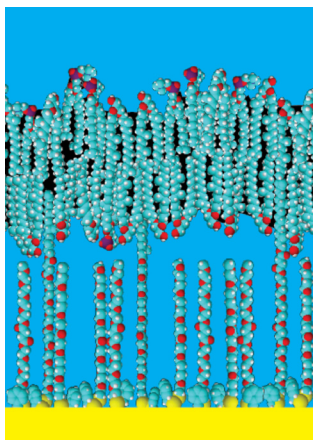
- SDx-R1 **tethaPod** hardware and software
- SDx-T10 **tethaPlate™** cartridges (ten pack)
- SDx-S1 Phospholipid Mix (1 mL pack)
- SDx-A1 tethaPlate Assembly Jig
- SDx-A2 tethaPod test card

### Applications

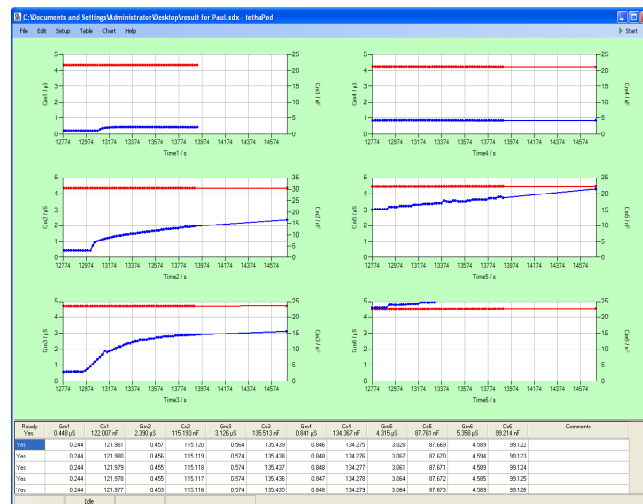
- **Biophysics:** examine phospholipid mixtures for the ability to form coherent bilayer membranes.
- **Proteomics:** check protein fractions to determine membrane compatibility and ion channel activity.
- **Pharmacology:** Screening assays and dose/response experiments on ion channel toxins, blockers, and activators.
- **Electrophysiology:** ion channel behaviour.

### Compatibility

The **tethaPod** connects via USB (as a virtual serial, or COM, port device) to Windows XP, Windows Vista, or Windows 7 computers.



tethered phospholipid bilayer



tethaPod software graphs and tabulates data from the six tethaPlate chambers

www.eDAQ.com

E-mail: info@edaq.com

tethaPod, tethaPlate, tethaPatch, and tethaPlasm are trademarks of SDx Tethered Membranes Pty Ltd. All other trademarks are the property of their respective owners. P12/12

WARRANTY: tethaPod is supported by a one year warranty

Document Number: M-SDxK1-0212

Copyright © eDAQ 2012